

- W1: (JORISIDE SHIELD SYSTEM) Or Similar.  
 102.5mm low level brickwork to be Terca Staffordshire smooth blue with grey Y2 mortar. Supply and fix an over rail lining comprising 0.4mm thick bright white liner tray complete with galv. steel spacer bars / brackets, 180mm thick 0.040 fibreglass quilt insulation (u-value 0.26). Supply and fix 0.7mm thick galv. steel (vertical) leathergrain plastisol coated Albatross (BS 18 B 17) one side trapezoidal wall cladding to structural (cold rolled 1.5mm minimum thickness) horizontal sheeting rails at 2000mm maximum centres supplied and fixed by the steelwork subcontractor. Supply and fix associated flashings, trims, filler blocks, raking cutting etc., at sills, corners, abutments etc., as required to form a weathertight skin. Anthracite (RAL 7016) trims everywhere. Internal skin of 140mm blockwork up to 2475mm above FFL to receive painted finish.
- W2: (JORISIDE SHIELD SYSTEM) Or Similar.  
 102.5mm low level brickwork to be Terca Staffordshire smooth blue with grey Y2 mortar. Supply and fix an over rail lining comprising 0.4mm thick bright white liner tray complete with galv. steel spacer bars / brackets, 180mm thick 0.040 fibreglass quilt insulation (u-value 0.26). Supply and fix 0.7mm thick galv. steel (horizontal) leathergrain plastisol coated Anthracite (RAL 7016) one side trapezoidal wall cladding to structural (cold rolled 1.5mm minimum thickness) horizontal sheeting rails at 2000mm maximum centres supplied and fixed by the steelwork subcontractor. Supply and fix associated flashings, trims, filler blocks, raking cutting etc., at sills, corners, abutments etc., as required to form a weathertight skin. Anthracite (RAL 7016) trims everywhere. Internal skin of 140mm blockwork up to 2475mm above FFL to receive painted finish.
- W3: (TATA STEEL TRIMAPANEL) Or Similar.  
 102.5mm low level brickwork to be Terca Staffordshire smooth blue with grey Y2 mortar. Supply and fix a composite wall panel in Spectrum (or similar) coated finish to either 1.6mm thick galvanized steel vertical top hat flashings. The composite panel to comprise of 0.5mm thick Spectrum coated external steel sheet panels in Metallic Silver (RAL 9006) & Anthracite (RAL 7016). Feature panels to be Saffron Yellow (BS 08E53) or similar. 80mm thick insulation and a 0.4mm thick bright white internal steel liner (uvalue 0.26 watts). Supply and fix associated flashings, trims, filler blocks, raking cutting etc., at sills, corners, abutments, jambs etc. as required to form a weathertight skin.
- W4: (TATA STEEL TRIMAPANEL) Or Similar. WITH BLOCKWORK GROUND FLOOR AND 1' STUD FIRST FLOOR  
 102.5mm low level brickwork to be Terca Staffordshire smooth blue with grey Y2 mortar. Supply and fix a composite wall panel in Spectrum (or similar) coated finish to either 1.6mm thick galvanized steel vertical top hat flashings. The composite panel to comprise of 0.5mm thick Spectrum coated external steel sheet panels in Metallic Silver (RAL 9006) & Anthracite (RAL 7016). Feature panels to be Saffron Yellow (BS 08E53) or similar. 80mm thick insulation and a 0.4mm thick bright white internal steel liner (uvalue 0.26 watts). Supply and fix associated flashings, trims, filler blocks, raking cutting etc., at sills, corners, abutments, jambs etc. as required to form a weathertight skin. Internal skin of 140mm blockwork up to underside of first floor. Above first floor to be British Gypsum metal framing 70170 1' stud with plasterboard and skim finish.
- W5 215mm SOLID DENSE BLOCKWORK WITH DOT & DAB TO OFFICES  
 215mm solid dense blockwork lift shaft walls (100mm blockwork laid flat) in full accordance with the Structural Engineer's details. Core side of walls to receive 23mm British Gypsum dot and dab wall board with 3mm skim finish.
- W6 140mm BLOCKWORK WITH INSULATION BACKED PLASTERBOARD  
 140mm medium density fair faced blockwork (to be approved) with bucket handle joints to warehouse side with 90mm British Gypsum GYPROC ThermoLine Super insulation backed plasterboard (fixed and laid to manufacturers recommendations) and skim finish to office side.
- W7 140mm MEDIUM DENSITY BLOCKWORK WITH DOT & DAB  
 140mm medium density blockwork with 23mm British Gypsum dot and dab wall board and 3mm skim finish. WC areas to receive half height tiling.
- W8 100mm MEDIUM DENSITY BLOCKWORK WITH PAINTED FINISH  
 100mm medium density fair faced blockwork (to be approved) with bucket handle joints to warehouse side with painted finish
- W9 BRITISH GYPSUM JUMBO STUD WALL FROM FIRST FLOOR TO UNDERSIDE OF ROOF  
 146mm gyframe 'C' studs at 400mm centres to have 2No. 12.5mm thick soundbloc boards either side and 2 x 75mm Iso wool APR 1200 in the cavity. Gyframe deep flange floor and ceiling channels to be used at head and base. All to achieve minimum 1hr fire rating.
- W10 70mm METAL FRAME WITH 18mm PLYWOOD, 15mm SOUNDBLOC BOARD, 3mm SKIM FINISH AND 25mm INSULATION  
 British Gypsum Gyptwall classic 70mm Gyframe 'C' studs at 600mm centres with 25mm Isover acoustic partition roll (APR 1200) in the cavity. Both sides to have 18mm plywood boarding, 15mm Gyproc Soundbloc F board and 3mm skim finish all fixed to manufacturers recommendations to achieve 1hr fire rating.
- W11 70mm METAL FRAME  
 British Gypsum Gyptwall classic 70mm Gyframe 'C' studs at 600mm centres with 12.5mm plasterboard and 3mm skim finish both sides.

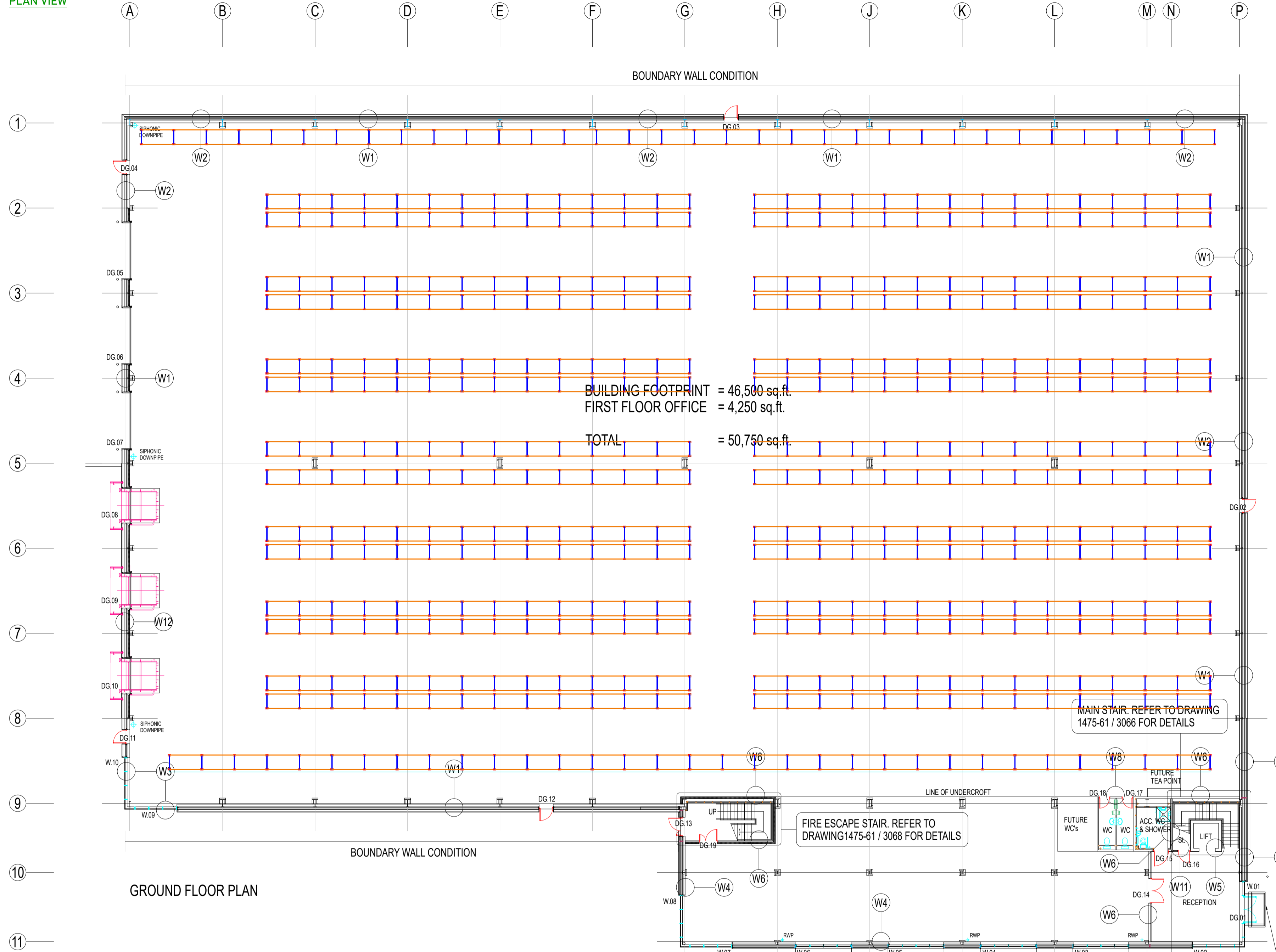
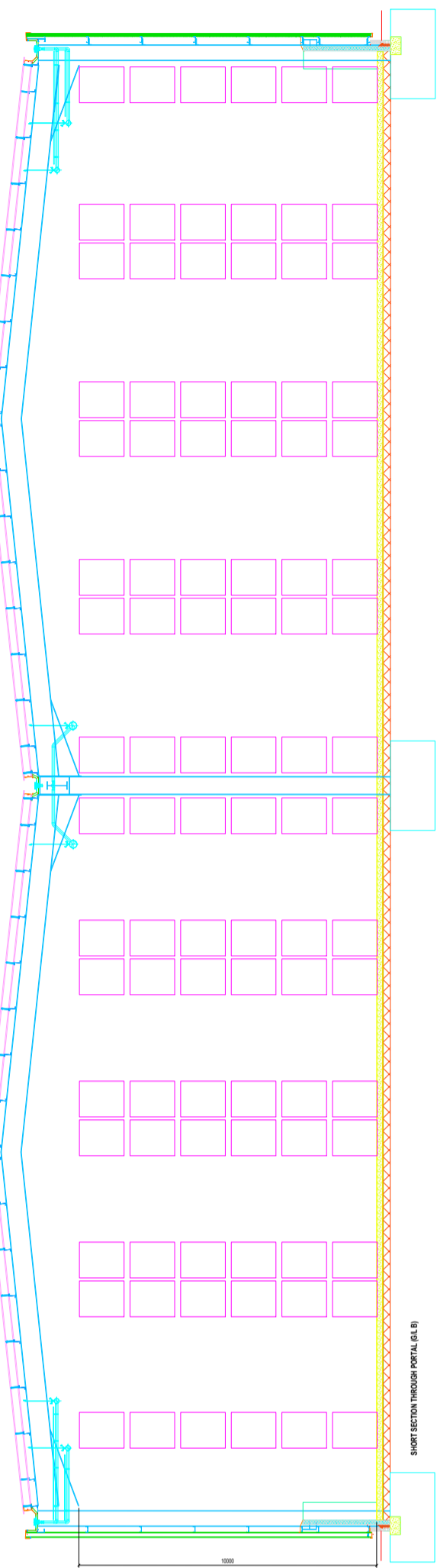
NOTES	
REVISION	DATE
-	00-00-0000

**PALLET COUNT = 6,582**

CLIENT		 Unit 5 Mariner Court Calder Park Wakefield WF4 3FL 0113 880 0866 info@quicklinestorage.co.uk www.quicklinestorage.co.uk	
DRAWING NO.	CAD REFERENCE		
REVISION	INSTALLATION DATE		
ENQUIRY	<input checked="" type="checkbox"/>		
FIRST APPROVAL	<input type="checkbox"/>	TITLE	
FINAL APPROVAL	<input type="checkbox"/>	TB51 NARROW AISLE	
INSTALLATION DRAWING		<input type="checkbox"/>	
DRAWN BY	CHECKED BY	APPROVED BY	COPYRIGHT This Drawing is the property of QUICKLINE LIMITED. It may not be copied without the permission of the above mentioned company. The information shown on this drawing is to be considered confidential and may not be disclosed to any third party.
DATE DRAWN	SCALES USED	PAGE SIZE	
00-00-0000	1:1	A1	

END ELEVATION

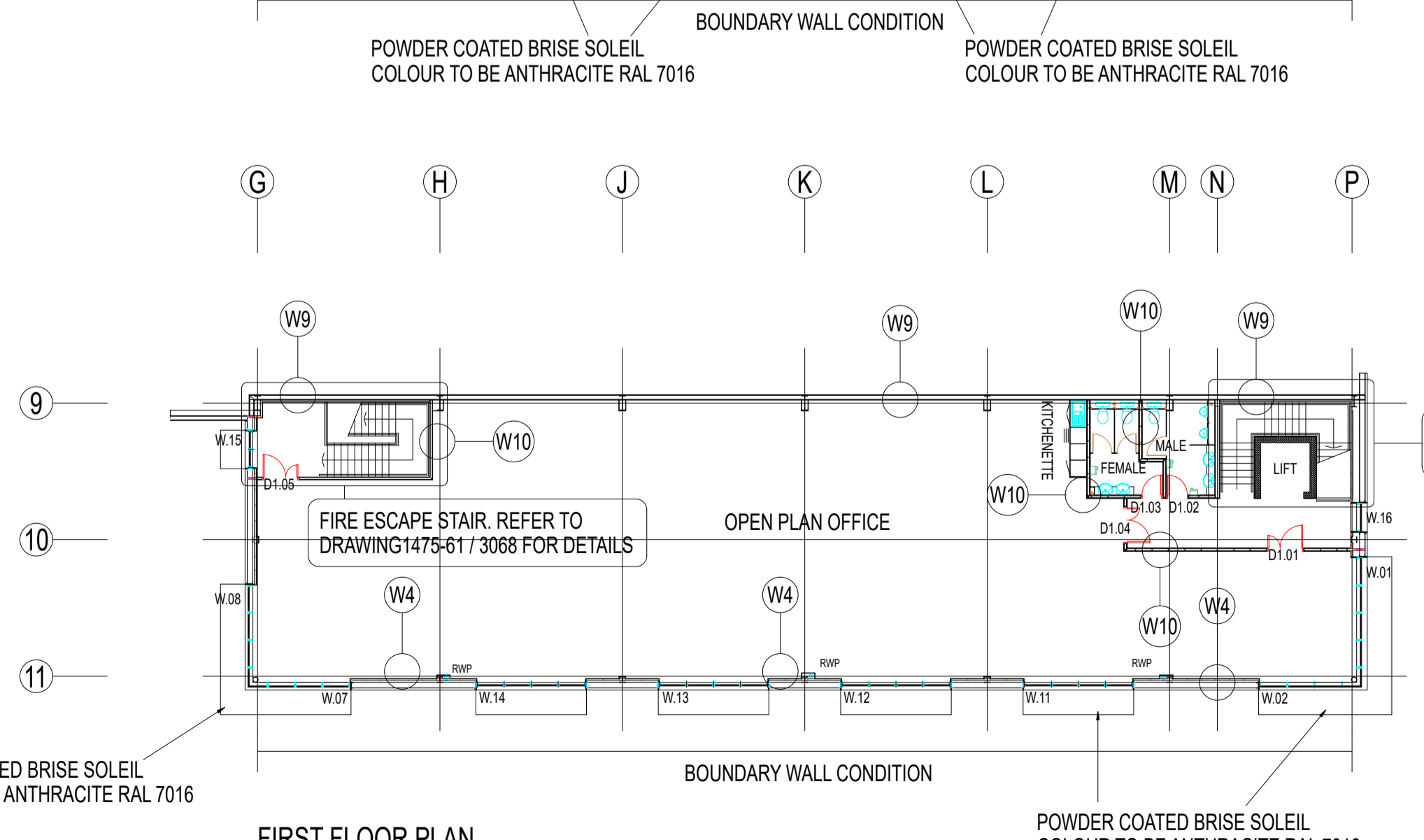
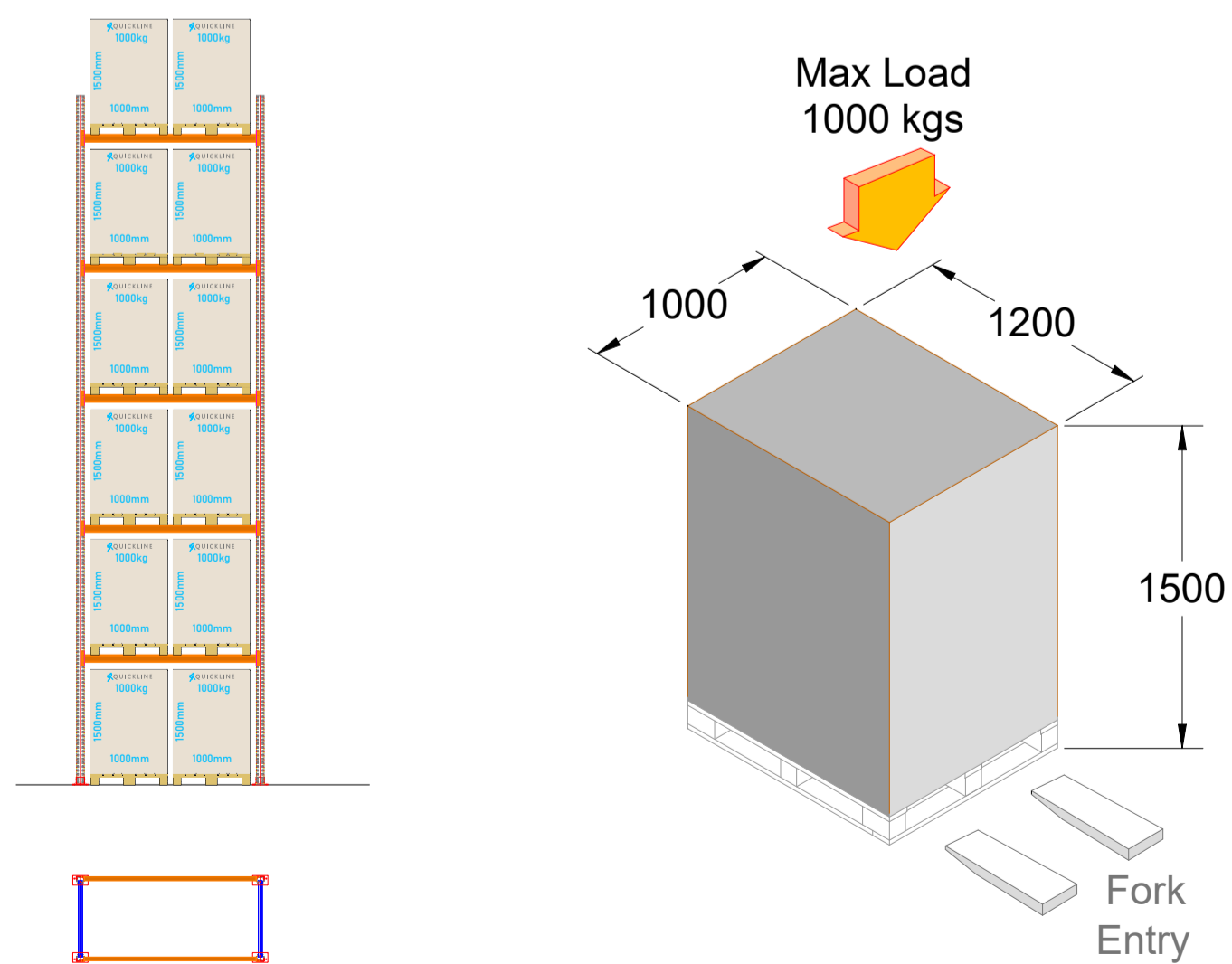
PLAN VIEW



GROUND FLOOR PLAN

END ELEVATION

PALLET DIMENSIONS



FIRST FLOOR PLAN

W1: (JORSIDE SHIELD SYSTEM) Or Similar.

102.5mm low level brickwork to be Terca Staffordshire smooth blue with grey Y2 mortar. Supply and fix an over rail lining comprising 0.4mm thick bright white liner tray complete with galv. steel spacer bars / brackets, 180mm thick 0.040 fibreglass quilt insulation (u-value 0.26). Supply and fix 0.7mm thick galv. steel (vertical) leathergrain plastisol coated Albatross (BS 18 B 17) one side trapezoidal wall cladding to structural (cold rolled 1.5mm minimum thickness) horizontal sheeting rails at 2000mm maximum centres supplied and fixed by the steelwork subcontractor. Supply and fix associated flashings, trims, filler blocks, raking cutting etc., at sills, corners, abutments etc., as required to form a weathertight skin. Anthracite (RAL 7016) trims everywhere. Internal skin of 140mm blockwork up to 2475mm above FFL to receive painted finish.

W2: (JORSIDE SHIELD SYSTEM) Or Similar.

102.5mm low level brickwork to be Terca Staffordshire smooth blue with grey Y2 mortar. Supply and fix an over rail lining comprising 0.4mm thick bright white liner tray complete with galv. steel spacer bars / brackets, 180mm thick 0.040 fibreglass quilt insulation (u-value 0.26 watts). Supply and fix 0.7mm thick galv. steel (horizontal) leathergrain plastisol coated Anthracite (RAL 7016) one side trapezoidal wall cladding to structural (cold rolled 1.5mm minimum thickness) horizontal sheeting rails at 2000mm maximum centres supplied and fixed by the steelwork subcontractor. Supply and fix associated flashings, trims, filler blocks, raking cutting etc., at sills, corners, abutments etc., as required to form a weathertight skin. Anthracite (RAL 7016) trims everywhere. Internal skin of 140mm blockwork up to 2475mm above FFL to receive painted finish.

W3: (TATA STEEL TRIMAPANEL) Or Similar.

102.5mm low level brickwork to be Terca Staffordshire smooth blue with grey Y2 mortar. Supply and fix a composite wall panel in Spectrum (or similar) coated finish to either 1.6mm thick galvanized steel vertical top hat flashings. The composite panel to comprise of 0.5mm thick Spectrum coated external steel sheet panels in Metallic Silver (RAL 9006) & Anthracite (RAL 7016). Feature panels to be Saffron Yellow (BS 08E53) or similar. 80mm thick insulation and a 0.4mm thick bright white internal steel liner (uvalue 0.26 watts). Supply and fix associated flashings, trims, filler blocks, raking cutting etc., at sills, corners, abutments, jamps etc. as required to form a weathertight skin.

W4: (TATA STEEL TRIMAPANEL) Or Similar. WITH BLOCKWORK GROUND FLOOR AND 'I' STUD FIRST FLOOR

102.5mm low level brickwork to be Terca Staffordshire smooth blue with grey Y2 mortar. Supply and fix a composite wall panel in Spectrum (or similar) coated finish to either 1.6mm thick galvanized steel vertical top hat flashings. The composite panel to comprise of 0.5mm thick Spectrum coated external steel sheet panels in Metallic Silver (RAL 9006) & Anthracite (RAL 7016). Feature panels to be Saffron Yellow (BS 08E53) or similar. 80mm thick insulation and a 0.4mm thick bright white internal steel liner (uvalue 0.26 watts). Supply and fix associated flashings, trims, filler blocks, raking cutting etc., at sills, corners, abutments, jamps etc. as required to form a weathertight skin. Internal skin of 140mm blockwork up to underside of first floor. Above first floor to be British Gypsum metal framing 70/70 'I' stud with plasterboard and skim finish.

W5 215mm SOLID DENSE BLOCKWORK WITH DOT & DAB TO OFFICES

215mm solid dense blockwork lift shaft walls (100mm blockwork laid flat) in full accordance with the Structural Engineer's details. Core side of walls to receive 23mm British Gypsum dot and dab wall board with 3mm skim finish.

W6 140mm BLOCKWORK WITH INSULATION BACKED PLASTERBOARD

140mm medium density fair faced blockwork (to be approved) with bucket handle joints to warehouse side with 90mm British Gypsum GYPROC ThermalLine Super insulation backed plasterboard (fixed and laid to manufacturers recommendations) and skim finish to office side.

W7 140mm MEDIUM DENSITY BLOCKWORK WITH DOT & DAB

140mm medium density blockwork with 23mm British Gypsum dot and dab wall board and 3mm skim finish. WC areas to receive half height tiling.

W8 100mm MEDIUM DENSITY BLOCKWORK WITH PAINTED FINISH

100mm medium density fair faced blockwork (to be approved) with bucket handle joints to warehouse side with painted finish

W9 BRITISH GYPSUM JUMBO STUD WALL FROM FIRST FLOOR TO UNDERSIDE OF ROOF

146mm gyframe 'C' studs at 400mm centres to have 2No. 12.5mm thick soundbloc boards either side and 2 x 75mm Iso wool APR 1200 in the cavity. Gyframe deep flange floor and ceiling channels to be used at head and base. All to achieve minimum 1hr fire rating.

W10 70mm METAL FRAME WITH 18mm PLYWOOD, 15mm SOUNDBLOC BOARD, 3mm SKIM FINISH AND 25mm INSULATION

British Gypsum Gypwall classic 70mm Gyframe 'C' studs at 600mm centres with 25mm Isover acoustic partition roll (APR 1200) in the cavity. Both sides to have 18mm plywood boarding, 15mm Gyproc Soundbloc F board and 3mm skim finish all fixed to manufacturers recommendations to achieve 1hr fire rating.

W11 70mm METAL FRAME

British Gypsum Gypwall classic 70mm Gyframe 'C' studs at 600mm centres with 12.5mm plasterboard and 3mm skim finish both sides.

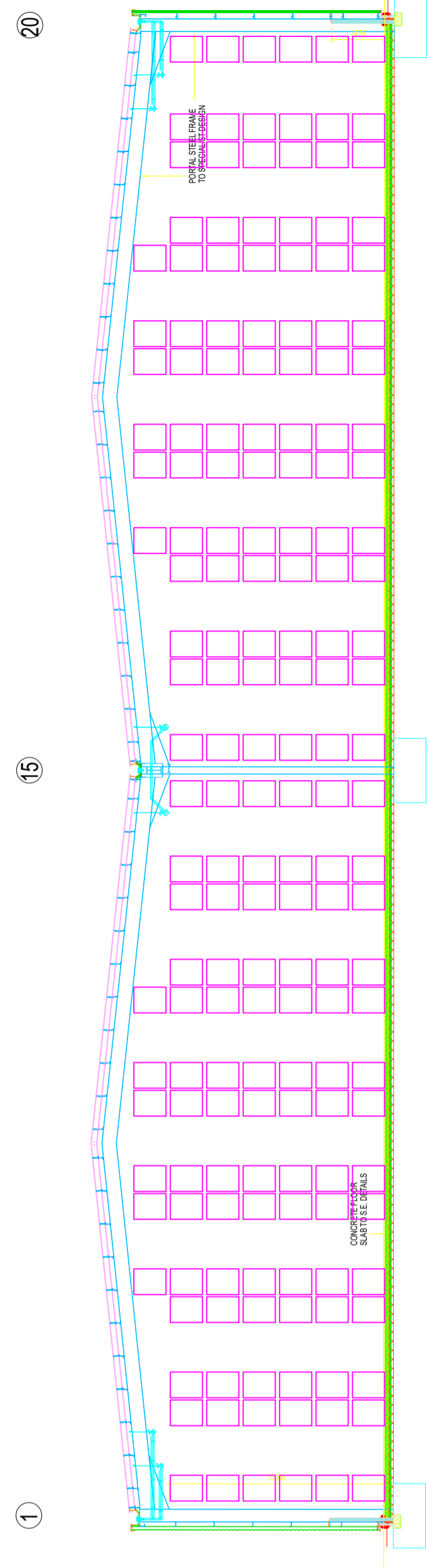
NOTES

REVISION	DATE
-	00-00-0000

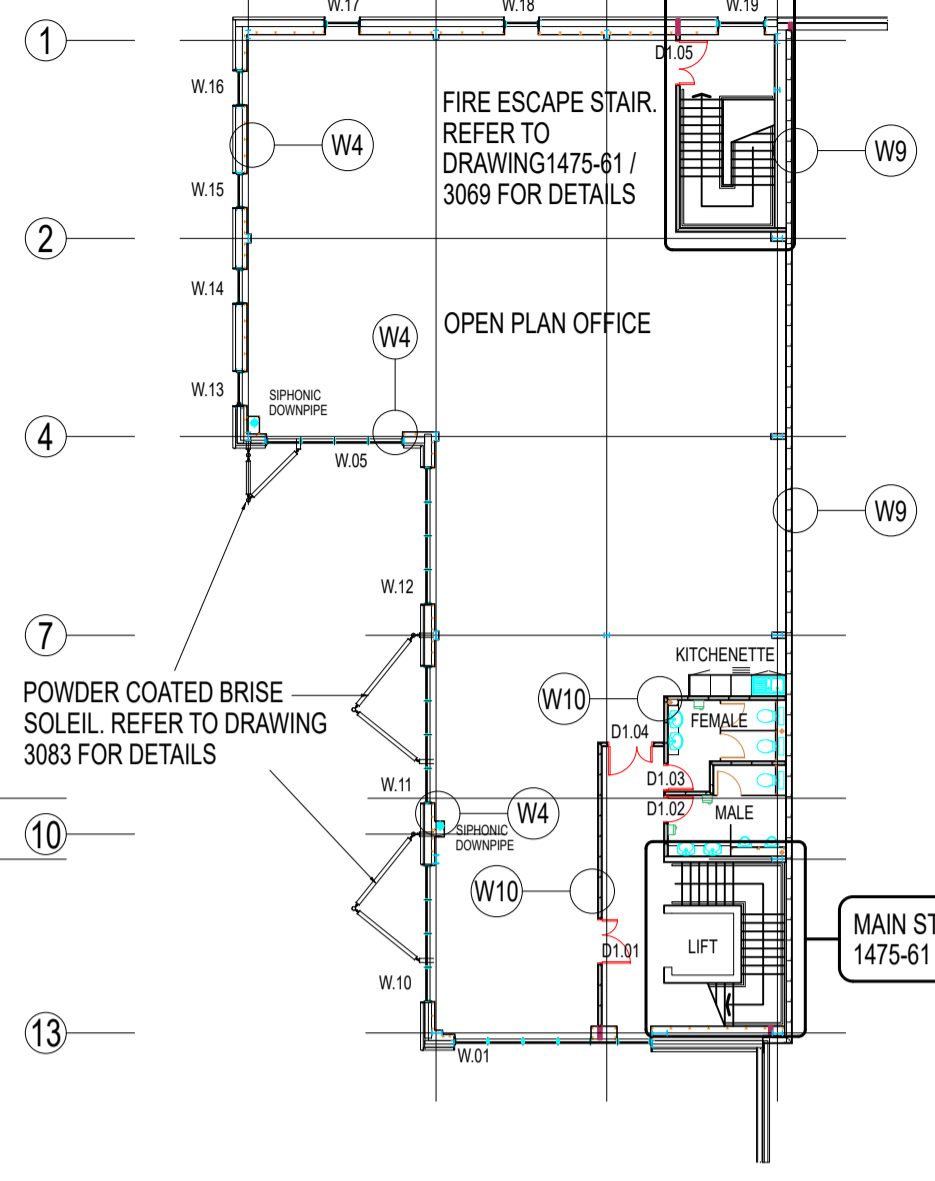
PALLET COUNT = 5,316

CLIENT			<p>Unit 5 Mariner Court Calder Park Wakefield WF4 3FL 0113 880 0866 info@quicklinestorage.co.uk www.quicklinestorage.co.uk</p>
DRAWING NO.	CAD REFERENCE		
REVISION	INSTALLATION DATE		
ENQUIRY	<input checked="" type="checkbox"/>		
FIRST APPROVAL	<input type="checkbox"/>		
FINAL APPROVAL	<input type="checkbox"/>	TITLE	TB51 WIDE AISLE
INSTALLATION DRAWING			
DRAWN BY	CHECKED BY	APPROVED BY	COPYRIGHT
AS	-	-	This Drawing is the property of QUICKLINE LIMITED. It may not be copied without the permission of the above mentioned company. The information shown on this drawing is to be considered confidential and may not be disclosed to any third party.
DATE DRAWN	SCALES USED	PAGE SIZE	
00-00-0000	1:1	A1	

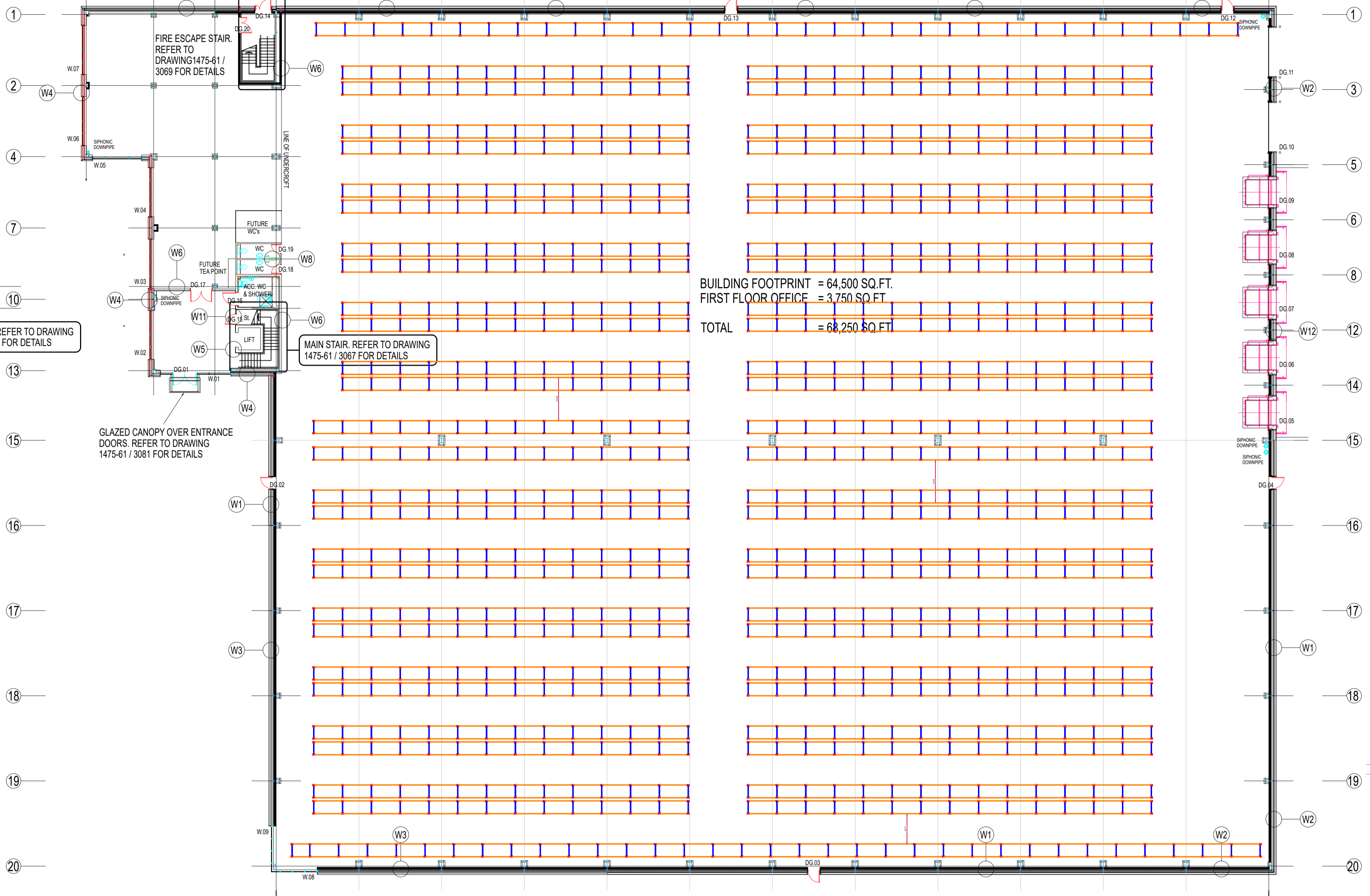
END ELEVATION



SHORT SECTION THROUGH PORTAL (GL-Q)



PLAN VIEW



GROUND FLOOR PLAN

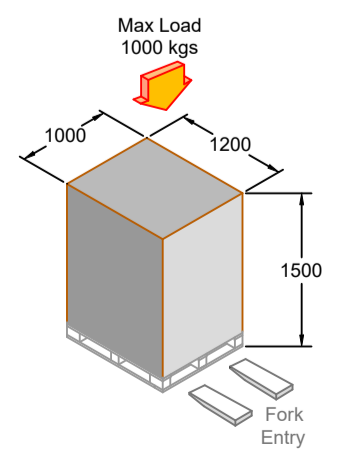
BOUNDARY WALL CONDITION

BUILDING FOOTPRINT = 64,500 SQ.FT.  
FIRST FLOOR OFFICE = 3,750 SQ.FT.  
TOTAL = 68,250 SQ.FT.

BAY ELEVATION



PALLET DIMENSIONS



W1: (JORISIDE SHIELD SYSTEM) Or Similar.  
102.5mm low level brickwork to be Teca Staffordshire smooth blue with grey Y2 mortar. Supply and fix an over rail lining comprising 0.4mm thick bright white liner tray complete with galv. steel spacer bars / brackets, 180mm thick 0.040 fibreglass quilt insulation (u-value 0.28). Supply and fix 0.7mm thick galv. steel (vertical) leathergrain plastisol coated Albatross (BS 18 B 17) one side trapezoidal wall cladding to structural (cold rolled 1.5mm minimum thickness) horizontal sheeting rails at 2000mm maximum centres supplied and fixed by the steelwork subcontractor. Supply and fix associated flashings, trims, filler blocks, raking cutting etc., at sills, corners, abutments etc., as required to form a weathertight skin. Anthracite (RAL 7016) trims everywhere. Internal skin of 140mm blockwork up to 2475mm above FFL to receive painted finish.

W2: (JORISIDE SHIELD SYSTEM) Or Similar.  
102.5mm low level brickwork to be Teca Staffordshire smooth blue with grey Y2 mortar. Supply and fix an over rail lining comprising 0.4mm thick bright white liner tray complete with galv. steel spacer bars / brackets, 180mm thick 0.040 fibreglass quilt insulation (u-value 0.26 watts). Supply and fix 0.7mm thick galv. steel (horizontal) leathergrain plastisol coated Anthracite (RAL 7016) one side trapezoidal wall cladding to structural (cold rolled 1.5mm minimum thickness) horizontal sheeting rails at 2000mm maximum centres supplied and fixed by the steelwork subcontractor. Supply and fix associated flashings, trims, filler blocks, raking cutting etc., at sills, corners, abutments etc., as required to form a weathertight skin. Anthracite (RAL 7016) trims everywhere. Internal skin of 140mm blockwork up to 2475mm above FFL to receive painted finish.

W3: (TATA STEELS TRIMAPANEL) Or Similar.  
102.5mm low level brickwork to be Teca Staffordshire smooth blue with grey Y2 mortar. Supply and fix a composite wall panel in Spectrum (or similar) coated finish to comprise of 0.5mm thick Spectrum coated external steel sheet panels in Metallic Silver (RAL 9006) & Anthracite (RAL 7016). Feature panels to be Saffron Yellow (BS 08E53) or similar. 80mm thick insulation and a 0.4mm thick bright white internal steel liner (u-value 0.26 watts). Supply and fix associated flashings, trims, filler blocks, raking cutting etc., at sills, corners, abutments, jambs etc. as required to form a weathertight skin.

W4: (TATA STEELS TRIMAPANEL) Or Similar. WITH BLOCKWORK GROUND FLOOR AND 1<sup>ST</sup> STUD FIRST FLOOR  
102.5mm low level brickwork to be Teca Staffordshire smooth blue with grey Y2 mortar. Supply and fix a composite wall panel in Spectrum (or similar) coated finish to comprise of 0.5mm thick Spectrum coated external steel sheet panels in Metallic Silver (RAL 9006) & Anthracite (RAL 7016). Feature panels to be Saffron Yellow (BS 08E53) or similar. 80mm thick insulation and a 0.4mm thick bright white internal steel liner (u-value 0.26 watts). Supply and fix associated flashings, trims, filler blocks, raking cutting etc., at sills, corners, abutments, jambs etc. as required to form a weathertight skin. Internal skin of 140mm blockwork up to underside of first floor. Above first floor to be British Gypsum metal framing 7070 T stud with plasterboard and skim finish.

W5 215mm SOLID DENSE BLOCKWORK WITH DOT & DAB TO OFFICES  
215mm solid dense blockwork lift shaft walls (100mm blockwork laid flat) in full accordance with the Structural Engineer's details. Core side of walls to receive 23mm British Gypsum dot and dab wall board with 3mm skim finish.

W6 140mm BLOCKWORK WITH INSULATION BACKED PLASTERBOARD  
140mm medium density fair faced blockwork (to be approved) with bucket handle joints to warehouse side with 90mm British Gypsum GYPROC Thermaline Super insulation backed plasterboard (fixed and laid to manufacturers recommendations) and skim finish to office side.

W7 140mm MEDIUM DENSITY BLOCKWORK WITH DOT & DAB  
140mm medium density blockwork with 23mm British Gypsum dot and dab wall board and 3mm skim finish. WC areas to receive half height tiling.

W8 100mm MEDIUM DENSITY BLOCKWORK WITH PAINTED FINISH  
100mm medium density fair faced blockwork (to be approved) with bucket handle joints to warehouse side with painted finish.

W9 BRITISH GYPSUM JUMBO STUD WALL FROM FIRST FLOOR TO UNDERSIDE OF ROOF  
146mm gyproframe 'C' studs at 400mm centres to have 2No. 12.5mm thick soundbloc boards either side and 2 x 75mm Iso wool APR 1200 in the cavity. Gyproframe deep flange floor and ceiling channels to be used at head and base. All to achieve minimum 1hr fire rating.

W10 70mm METAL FRAME WITH 18mm PLYWOOD, 15mm SOUNDBLOC BOARD.  
3mm SKIM FINISH AND 25mm INSULATION  
British Gypsum Gypwall classic 70mm Gyproframe 'C' studs at 600mm centres with 25mm Isover acoustic partition roll (APR 1200) in the cavity. Both sides to have 18mm plywood boarding, 15mm Gyproc Soundbloc F board and 3mm skim finish all fixed to manufacturers recommendations to achieve 1hr fire rating.

W11 70mm METAL FRAME  
British Gypsum Gypwall classic 70mm Gyproframe 'C' studs at 600mm centres with 12.5mm plasterboard and 3mm skim finish both sides.

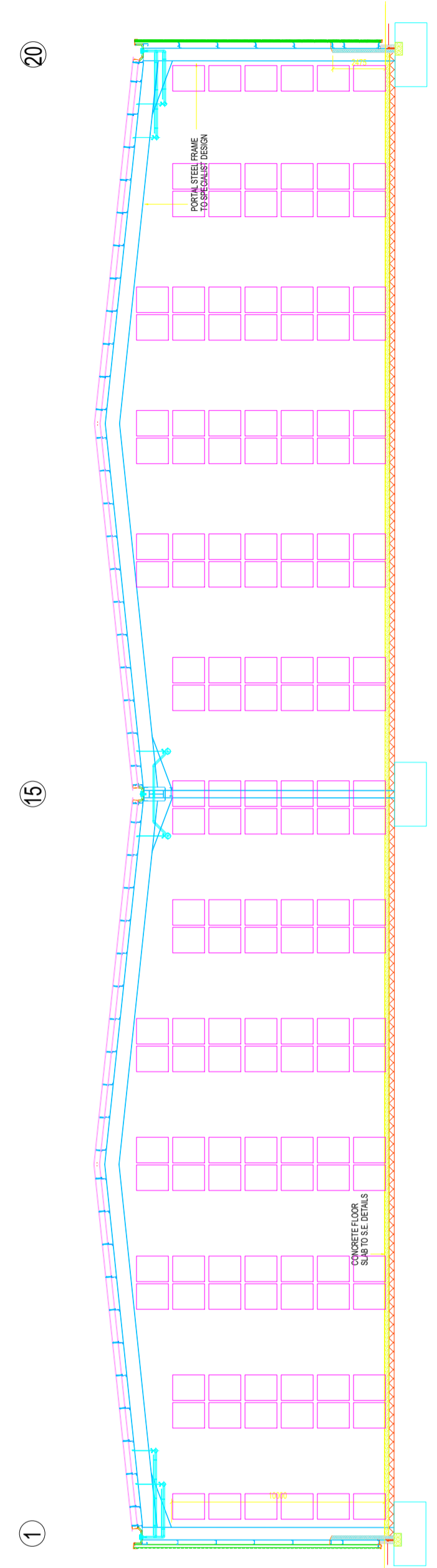
PALLET COUNT = 9,769

NOTES	
REVISION	DATE
-	00-00-0000

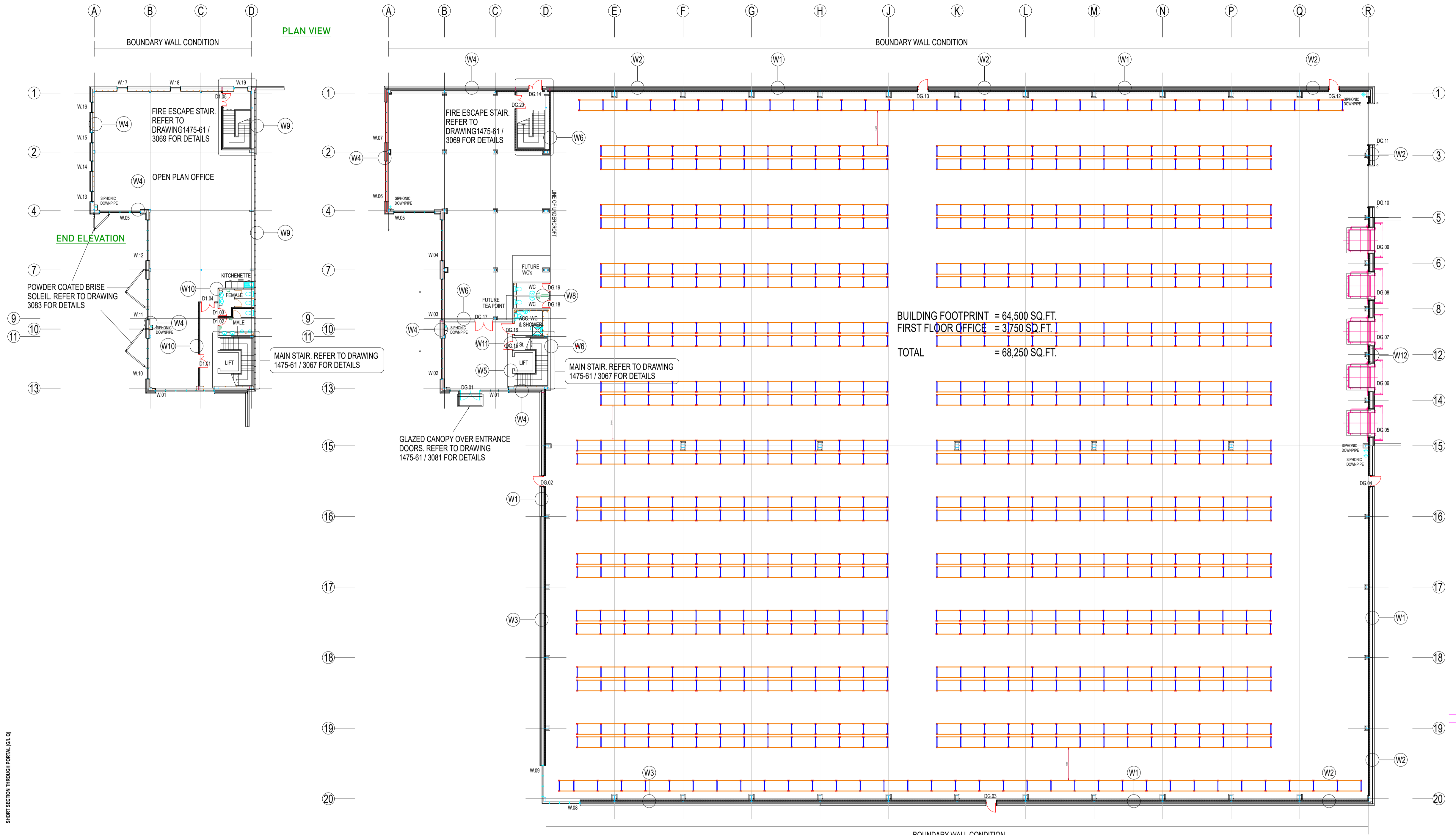
CLIENT		<p>Unit 5 Mariner Court Calder Park Wakefield WF4 3FL 0113 880 0866 info@quicklinestorage.co.uk www.quicklinestorage.co.uk</p>	
DRAWING NO.	CAD REFERENCE		
REVISION	INSTALLATION DATE		
ENQUIRY	<input checked="" type="checkbox"/>		
FIRST APPROVAL	<input type="checkbox"/>	TITLE	
FINAL APPROVAL	<input type="checkbox"/>	TB68 NARROW AISLE	
INSTALLATION DRAWING		<input type="checkbox"/>	
DRAWN BY	CHECKED BY	APPROVED BY	COPYRIGHT
AS	-	-	This Drawing is the property of QUICKLINE LIMITED. It may not be copied without the permission of the above mentioned company. The information shown on this drawing is to be considered confidential and may not be disclosed to any third party.
DATE DRAWN	SCALES USED	PAGE SIZE	
00-00-0000	1:1	A1	

END ELEVATION



SHORT SECTION THROUGH PORTAL (GL-Q)

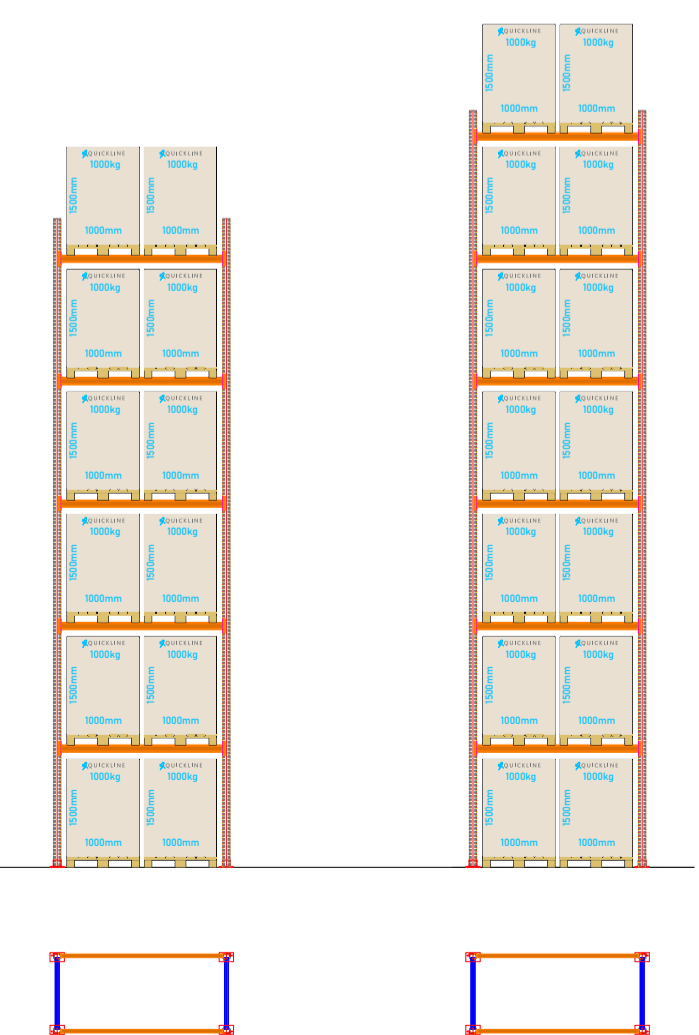
PLAN VIEW



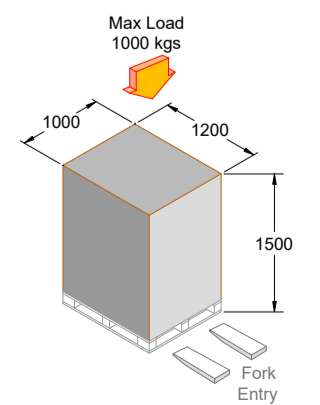
BUILDING FOOTPRINT = 64,500 SQ.FT.  
 FIRST FLOOR OFFICE = 3,750 SQ.FT.  
 TOTAL = 68,250 SQ.FT.

GROUND FLOOR PLAN

BAY ELEVATION



PALLET DIMENSIONS



W1: (JORSIDE SHIELD SYSTEM) Or Similar.

102.5mm low level brickwork to be Tercia Staffordshire smooth blue with grey Y2 mortar. Supply and fix an over rail lining comprising 0.4mm thick bright white liner tray complete with galv. steel spacer bars / brackets, 180mm thick 0.040 fibreglass quilt insulation (u-value 0.26). Supply and fix 0.7mm thick galv. steel (vertical) leathergrain plastisol coated Alabattoss (BS 13 B 17) one side trapezoidal wall cladding to structural (cold rolled 1.5mm minimum thickness) horizontal sheeting rails at 2000mm maximum centres supplied and fixed by the steelwork subcontractor. Supply and fix associated flashings, trims, filler blocks, raking cutting etc., at sills, corners, abutments etc., as required to form a weathertight skin. Anthracite (RAL 7016) trims everywhere. Internal skin of 140mm blockwork up to 2475mm above FFL to receive painted finish.

W2: (JORSIDE SHIELD SYSTEM) Or Similar.

102.5mm low level brickwork to be Tercia Staffordshire smooth blue with grey Y2 mortar. Supply and fix an over rail lining comprising 0.4mm thick bright white liner tray complete with galv. steel spacer bars / brackets, 180mm thick 0.040 fibreglass quilt insulation (u-value 0.26 watts). Supply and fix 0.7mm thick galv. steel (horizontal) leathergrain plastisol coated Anthracite (RAL 7016) one side trapezoidal wall cladding to structural (cold rolled 1.5mm minimum thickness) horizontal sheeting rails at 2000mm maximum centres supplied and fixed by the steelwork subcontractor. Supply and fix associated flashings, trims, filler blocks, raking cutting etc., at sills, corners, abutments etc., as required to form a weathertight skin. Anthracite (RAL 7016) trims everywhere. Internal skin of 140mm blockwork up to 2475mm above FFL to receive painted finish.

W3: (TATA STEELS TRIMAPANEL) Or Similar.

102.5mm low level brickwork to be Tercia Staffordshire smooth blue with grey Y2 mortar. Supply and fix a composite wall panel in Spectrum (or similar) coated finish to either 1.6mm thick galvanized steel vertical top hat flashings. The composite panel to comprise of 0.5mm thick Spectrum coated external steel sheet panels in Metallic Silver (RAL 9006) & Anthracite (RAL 7016). Feature panels to be Saffron Yellow (BS 08E53) or similar, 80mm thick insulation and a 0.4mm thick bright white internal steel liner (u-value 0.26 watts). Supply and fix associated flashings, trims, filler blocks, raking cutting etc., at sills, corners, abutments, jambs etc. as required to form a weathertight skin.

W4: (TATA STEELS TRIMAPANEL) Or Similar. WITH BLOCKWORK GROUND FLOOR AND 1' STUD FIRST FLOOR

102.5mm low level brickwork to be Tercia Staffordshire smooth blue with grey Y2 mortar. Supply and fix a composite wall panel in Spectrum (or similar) coated finish to either 1.6mm thick galvanized steel vertical top hat flashings. The composite panel to comprise of 0.5mm thick Spectrum coated external steel sheet panels in Metallic Silver (RAL 9006) & Anthracite (RAL 7016). Feature panels to be Saffron Yellow (BS 08E53) or similar, 80mm thick insulation and a 0.4mm thick bright white internal steel liner (u-value 0.26 watts). Supply and fix associated flashings, trims, filler blocks, raking cutting etc., at sills, corners, abutments, jambs etc. as required to form a weathertight skin. Internal skin of 140mm blockwork up to underside of first floor. Above first floor to be British Gypsum metal framing 70/70 1' stud with plasterboard and skim finish.

W5 215mm SOLID DENSE BLOCKWORK WITH DOT & DAB TO OFFICES  
 215mm solid dense blockwork lift shaft walls (100mm blockwork laid flat) in full accordance with the Structural Engineer's details. Core side of walls to receive 23mm British Gypsum dot and dab wall board with 3mm skim finish.

W6 140mm BLOCKWORK WITH INSULATION BACKED PLASTERBOARD  
 140mm medium density fair faced blockwork (to be approved) with bucket handle joints to warehouse side with 90mm British Gypsum GYPROC ThermalLine Super insulation backed plasterboard (fixed and laid to manufacturers recommendations) and skim finish to office side.

W7 140mm MEDIUM DENSITY BLOCKWORK WITH DOT & DAB  
 140mm medium density blockwork with 23mm British Gypsum dot and dab wall board and 3mm skim finish. WC areas to receive half height tiling.

W8 100mm MEDIUM DENSITY BLOCKWORK WITH PAINTED FINISH  
 100mm medium density fair faced blockwork (to be approved) with bucket handle joints to warehouse side with painted finish

W9 BRITISH GYPSUM JUMBO STUD WALL FROM FIRST FLOOR TO UNDERSIDE OF ROOF  
 146mm gyframe 'C' studs at 400mm centres to have 2No. 12.5mm thick soundbloc boards either side and 2 x 75mm Isowool APR 1200 in the cavity. Gyframe deep flange floor and ceiling channels to be used at head and base. All to achieve minimum 1hr fire rating.

W10 70mm METAL FRAME WITH 18mm PLYWOOD, 15mm SOUNDBLOC BOARD,  
 3mm SKIM FINISH AND 25mm INSULATION  
 British Gypsum Gywall classic 70mm Gyframe 'C' studs at 600mm centres with 25mm Isover acoustic partition roll (APR 1200) in the cavity. Both sides to have 18mm plywood boarding, 15mm Gyroc Soundloc F board and 3mm skim finish all fixed to manufacturers recommendations to achieve 1hr fire rating.

W11 70mm METAL FRAME  
 British Gypsum Gywall classic 70mm Gyframe 'C' studs at 600mm centres with 12.5mm plasterboard and 3mm skim finish both sides.

PALLET COUNT = 8,461

NOTES

REVISION	DATE
-	00-00-0000

**QUICKLINE**  
 Unit 5 Mariner Court  
 Calder Park  
 Wakefield  
 WF4 3FL  
 0113 880 0866  
 info@quicklinestorage.co.uk  
 www.quicklinestorage.co.uk

CLIENT	-	CAD REFERENCE	-
DRAWING NO.	-	INSTALLATION DATE	-
REVISION	-		
ENQUIRY	<input checked="" type="checkbox"/>		
FIRST APPROVAL	<input type="checkbox"/>		
FINAL APPROVAL	<input type="checkbox"/>		
INSTALLATION DRAWING	<input type="checkbox"/>		
DRAWN BY	AS	CHECKED BY	-
DATE DRAWN	00-00-0000	SCALES USED	1:1
		APPROVED BY	-
		PAGE SIZE	A1

TITLE  
 TB68 WIDE AISLE

COPYRIGHT  
 This Drawing is the property of QUICKLINE LIMITED. It may not be copied without the permission of the store mentioned company. The information shown on this drawing is to be considered confidential and may not be disclosed to any third party.